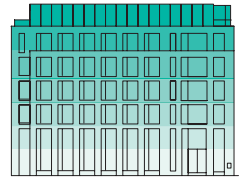


D

4,529

SQ FT



-  Office
-  Core
-  Lifts

Skinners Lane

Queen Street

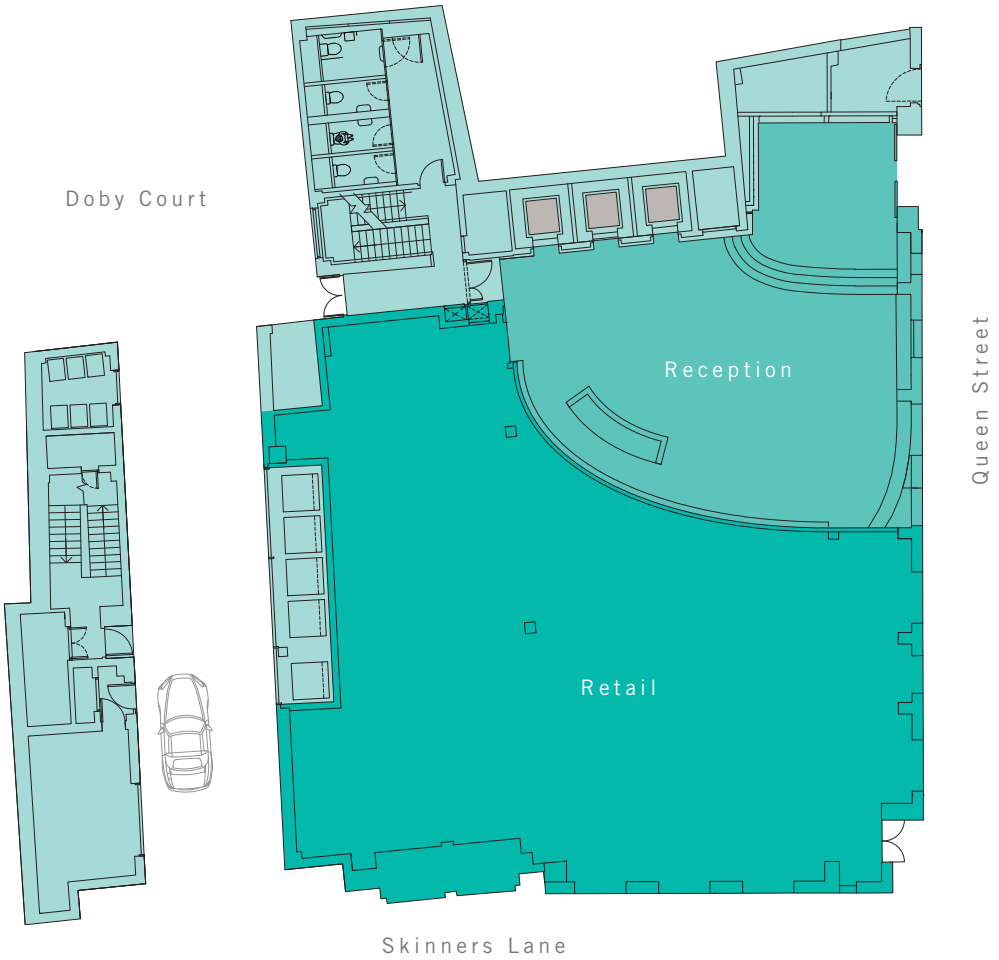
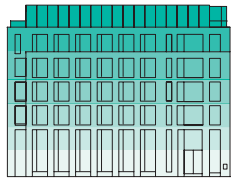


3,401
1,511

RETAIL

RECEPTION

SQ FT

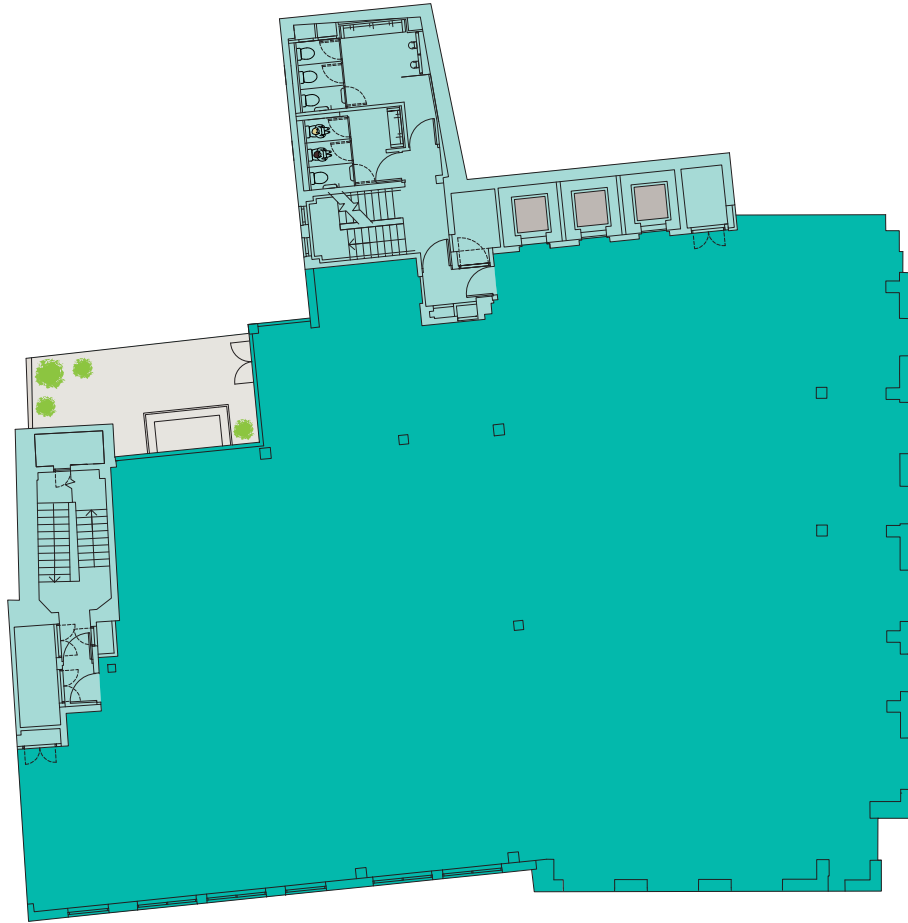
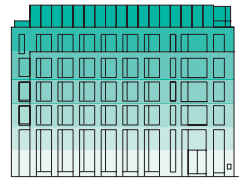


- Office
- Core
- Lifts

1

6,339

SQ FT



Queen Street

Skinner's Lane

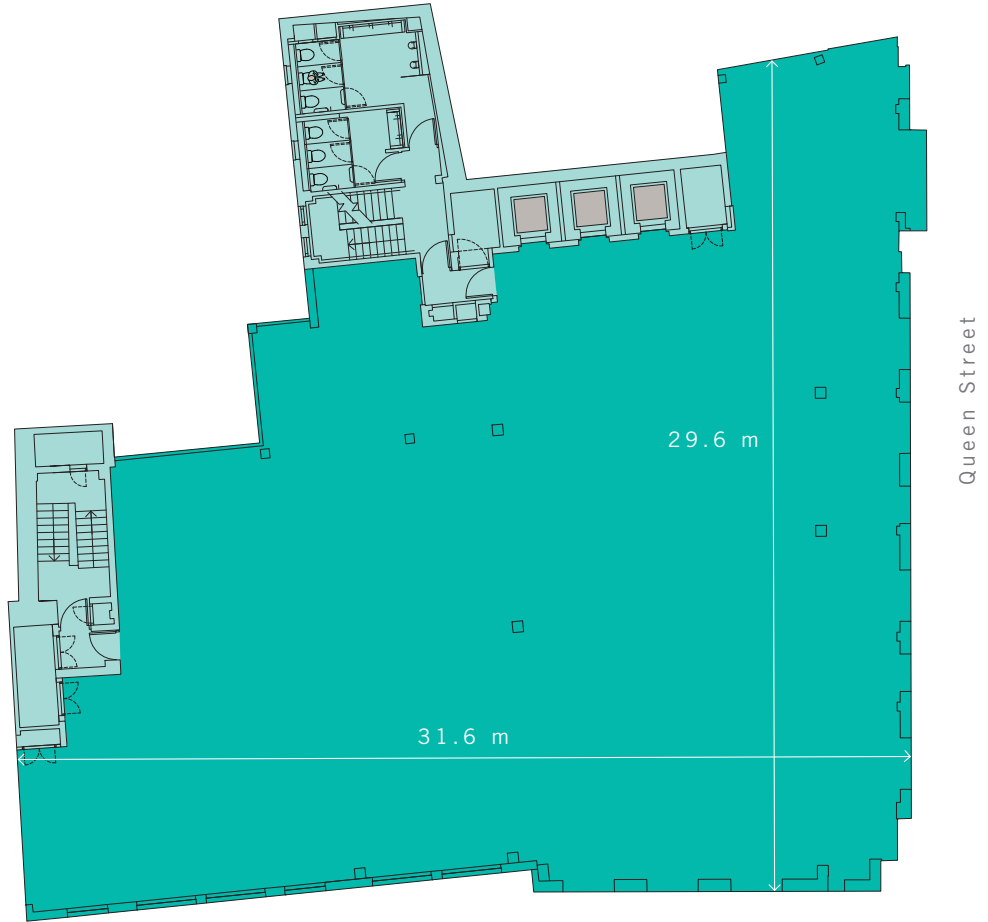
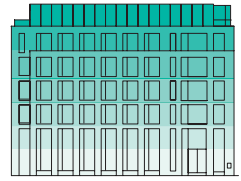


- Office
- Core
- Lifts
- Terrace

2

7,058

SQ FT



-  Office
-  Core
-  Lifts

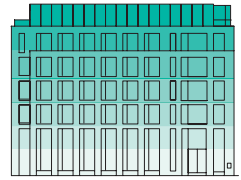
Skinners Lane

Queen Street

3

7,032

SQ FT



-  Office
-  Core
-  Lifts

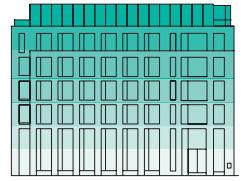
Skinners Lane

Queen Street

7
1

6,639

SQ FT



- Office
- Core
- Lifts
- Terrace

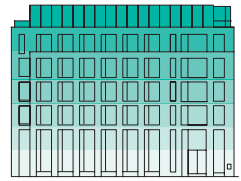
Skinners Lane

Queen Street

5

5,966

SQ FT



Queen Street

Skinners Lane

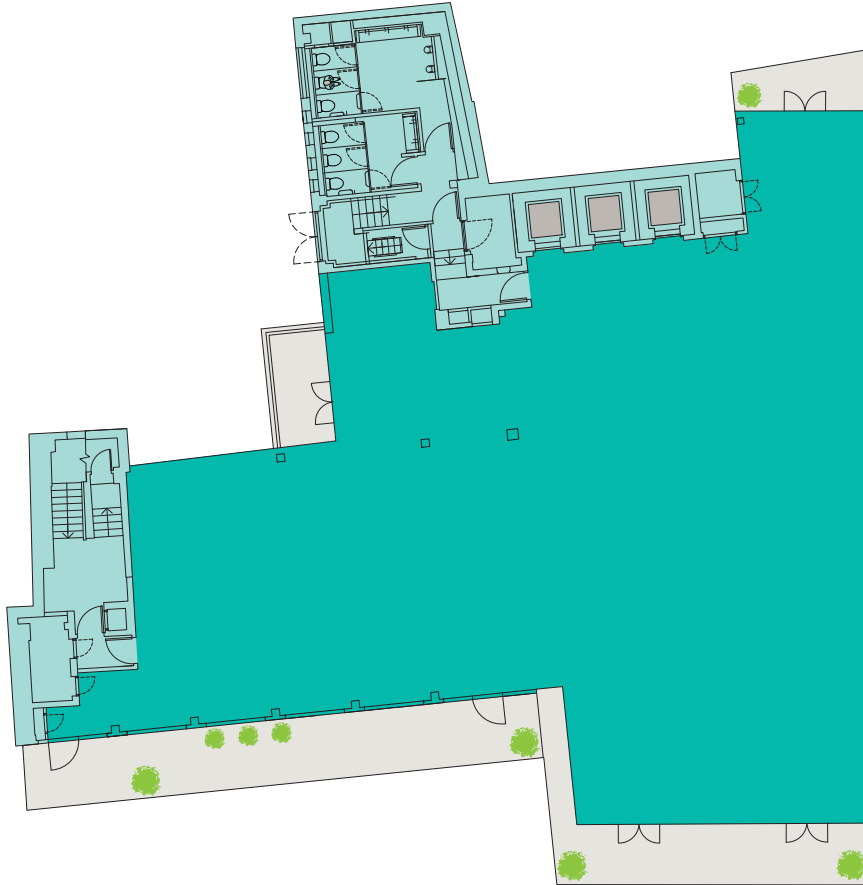
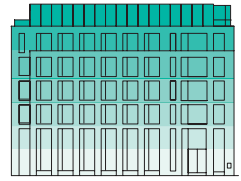


- Office
- Core
- Lifts
- Terrace



4,618





SQ FT



Queen Street

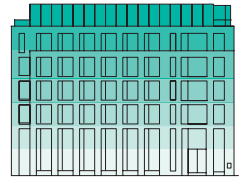
Skinners Lane



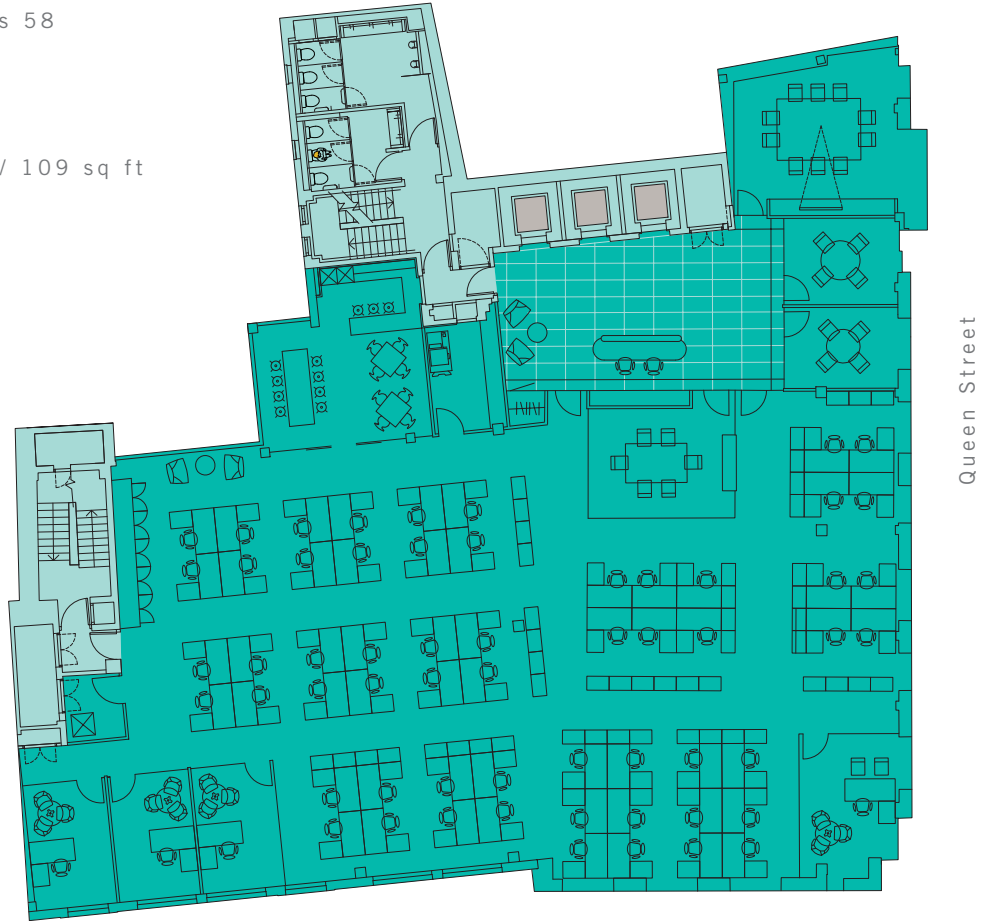
-  Office
-  Core
-  Lifts
-  Terrace

3

Corporate Layout



Single floor occupier
Open plan workstations 58
Cellular offices 4
Receptionists 2
Meeting rooms 4
Total headcount 64
1 person per 10 sq m / 109 sq ft



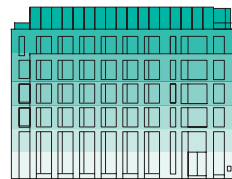
- Office
- Core
- Lifts

Skinners Lane

Queen Street

3

Cellular Layout



Single floor occupier

Open plan workstations 30

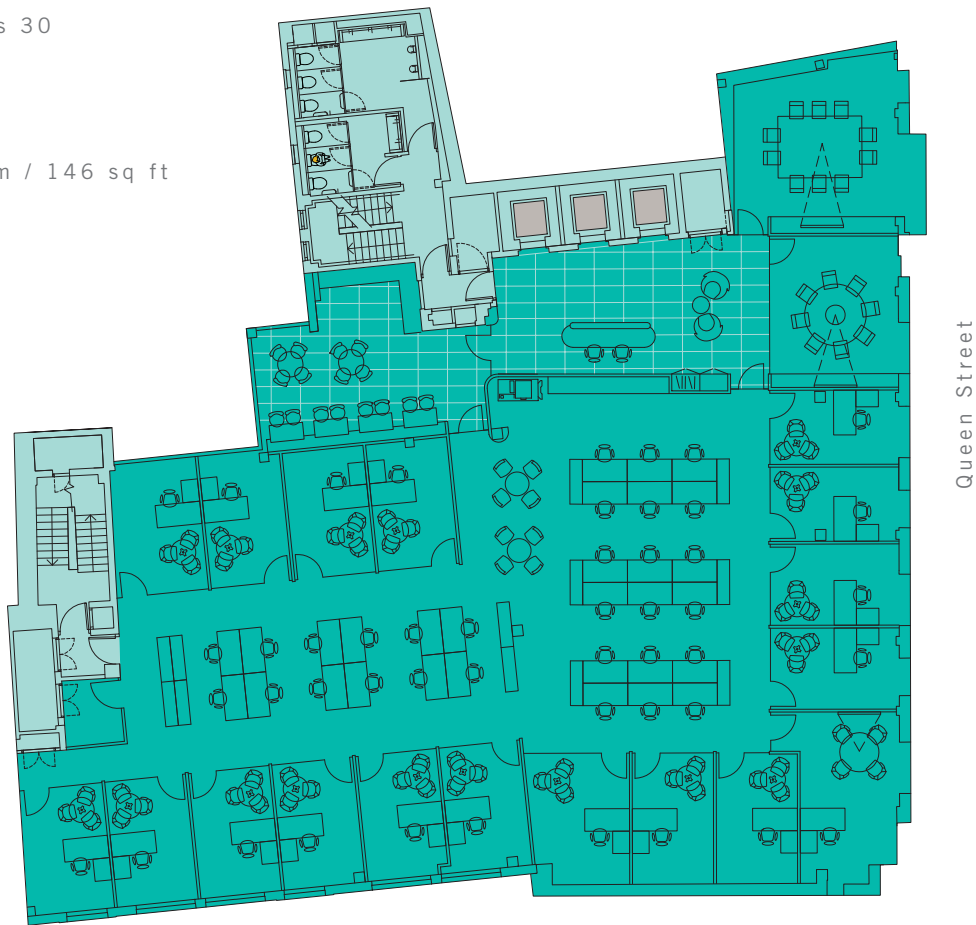
Cellular offices 18

Receptionists 2

Meeting rooms 2

Total headcount 50

1 person per 13.5 sq m / 146 sq ft



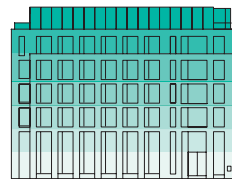
- Office
- Core
- Lifts

Skinners Lane

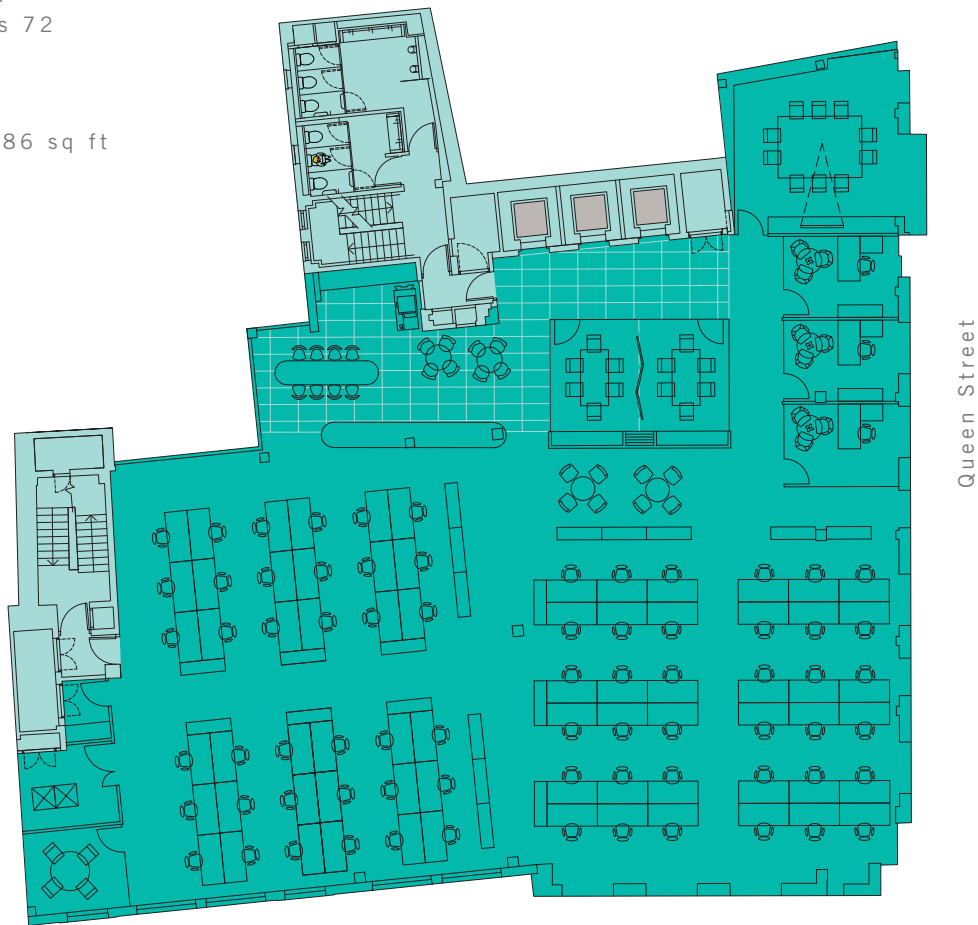
Queen Street

3

Financial Layout



Multiple floor occupier
Open plan workstations 72
Cellular offices 3
Meeting rooms 4
Total headcount 75
1 person per 8 sq m / 86 sq ft



-  Office
-  Core
-  Lifts

Skinners Lane

Queen Street